

RYW Press

6 Programma di fornitura

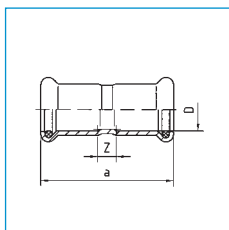
97

6.5 Rame GAS



G7270 Manicotto

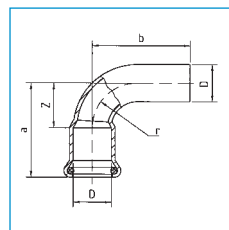
(2 x pressato)



Dimensione	N° articolo	a	Z
15 x 15	80340	43,0	3,0
18 x 18	80341	43,8	3,8
22 x 22	80342	45,9	3,9
28 x 28	80343	49,9	3,9
35 x 35	80344	62,0	10,0
42 x 42	80366	71,0	11,0
54 x 54	80367	83,0	13,0

G7001A Gomito a 90° maschio-femmina

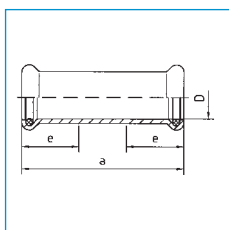
(pressato x estremità di inserimento)



Dimensione	N° articolo	a	Z	b	r
15 x Ø15	80298	38,0	18,0	51,0	18,0
18 x Ø18	80299	41,6	21,6	53,0	21,6
22 x Ø22	80300	47,4	26,4	59,5	26,4
28 x Ø28	80301	56,6	33,6	65,7	33,6
35 x Ø35	80302	68,0	42,0	82,5	42,0
42 x Ø42	80519	80,4	50,4	100,7	50,4
54 x Ø54	80520	99,8	64,8	120,1	64,8

G7270S Manicotto lungo

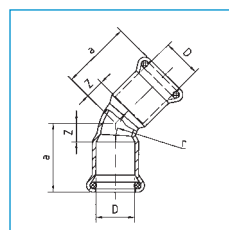
(2 x pressato)



Dimensione	N° articolo	a	e
15 x 15	80351	80	25
18 x 18	80352	80	25
22 x 22	80353	84	25
28 x 28	80354	91	30
35 x 35	80355	102	30
42 x 42	80372	120	40
54 x 54	80373	140	40

G7041 Gomito a 45° FF

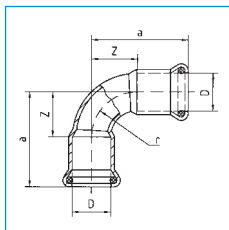
(2 x pressato)



Dimensione	N° articolo	a	Z	r
15 x 15	80313	27,5	7,5	18,0
18 x 18	80314	29,0	9,0	21,6
22 x 22	80315	31,9	10,9	26,4
28 x 28	80316	36,9	13,9	33,6
35 x 35	80317	43,4	17,4	42,0
42 x 42	80512	50,9	20,9	50,4
54 x 54	80513	61,8	26,8	64,8

G7002A Gomito a 90° FF

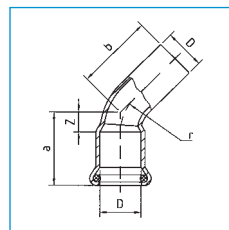
(2 x pressato)



Dimensione	N° articolo	a	Z	r
15 x 15	80303	38,0	18,0	18,0
18 x 18	80304	41,6	21,6	21,6
22 x 22	80305	47,4	26,4	26,4
28 x 28	80306	56,6	33,6	33,6
35 x 35	80307	68,0	42,0	42,0
42 x 42	80508	80,4	50,4	50,4
54 x 54	80509	99,8	64,8	64,8

G7040 Gomito a 45° maschio-femmina

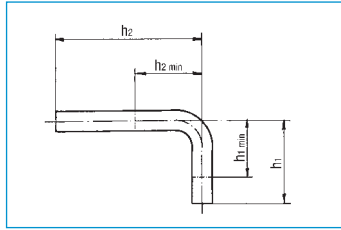
(pressato x estremità di inserimento)



Dimensione	N° articolo	a	Z	b	r
15 x Ø15	80308	27,5	7,5	36,7	18,0
18 x Ø18	80309	29,0	9,0	38,8	21,6
22 x Ø22	80310	31,9	10,9	43,6	26,4
28 x Ø28	80311	36,9	13,9	46,5	33,6
35 x Ø35	80312	43,4	17,4	57,9	42,0
42 x Ø42	80510	50,9	20,9	70,9	50,4
54 x Ø54	80511	61,8	26,8	82,1	64,8

G7005 Tubo ricurvo a 90° MM

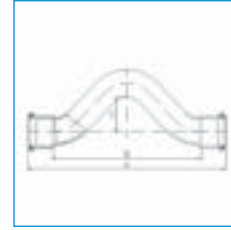
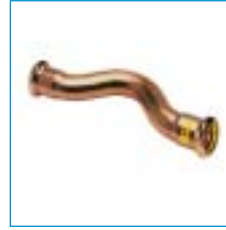
(2 x estremità di inserimento)



Dimensione	N° articolo	h2	h2min	h1	h1min
Ø15 x Ø15	80550	120	58	70	58
Ø18 x Ø18	80551	120	63	70	63
Ø22 x Ø22	80552	120	70	70	70
Ø28 x Ø28	80553	120	80	80	80
Ø35 x Ø35	80554	200	100	120	100

G7085 Scavalcatubi FF

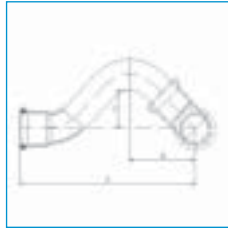
(2 x pressato)



Dimensione	N° articolo	a	c	Z
15 x 15	80374	139,5	25,7	99,5
18 x 18	80375	150,9	26,5	110,9
22 x 22	80376	169,0	28,0	127,0

G7086 Scavalcatubi MF

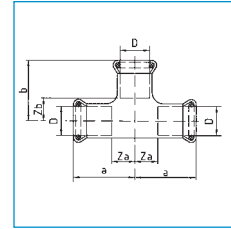
(pressato x estremità di inserimento)



Dimensione	N° articolo	a	b	c	e	Z
15 x Ø15	80380	110,4	45,5	25,7	40,7	90,4
18 x Ø18	80381	120,0	49,0	26,5	44,5	100,0
22 x Ø22	80382	134,5	54,6	28,1	50,0	113,5

G7130 Raccordo a T

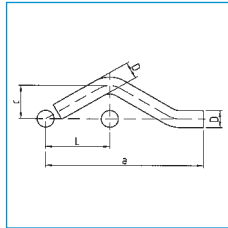
(3 x pressato)



Dimensione	N° articolo	a	Za	b	Zb	c	Zc
15 x 15 x 15	80318	32	12	32	12	32	12
18 x 18 x 18	80319	34	14	34	14	34	14
22 x 22 x 22	80320	37	16	37	16	37	16
28 x 28 x 28	80321	42	19	42	19	42	19
35 x 35 x 35	80322	50	24	50	24	50	34
42 x 42 x 42	80514	57	27	63	33	57	27
54 x 54 x 54	80515	69	34	78	43	69	34

G7087 Scavalcatubi MM

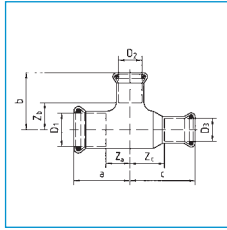
(2 x estremità di inserimento)



Dimensione	N° articolo	a	c	l
Ø15 x Ø15	82240	157	29,6	56
Ø18 x Ø18	82242	166	31,2	60
Ø22 x Ø22	82243	178	33,0	65

G7130 Raccordo a T con uscita ridotta/allargata

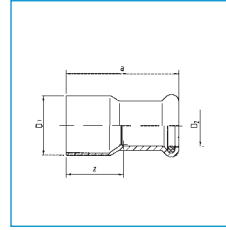
(con l'uscita irregolare, 3 x pressato)



Dimensione	N° art.	a	Za	b	Zb	c	Zc
18 x 15 x 18	80323	34	14	35,0	15,0	34,0	14,0
22 x 15 x 15	80324	37	16	38,0	18,0	43,4	23,4
22 x 15 x 18	80181	37	16	38,0	18,0	40,1	20,2
22 x 15 x 22	80325	37	16	38,0	18,0	37,0	16,0
22 x 18 x 22	80326	37	16	38,0	18,0	37,0	16,0
22 x 22 x 15	80327	37	16	37,0	16,0	46,4	26,4
28 x 15 x 28	80328	42	19	40,5	20,5	42,0	19,0
28 x 18 x 28	80350	42	19	40,5	20,5	42,0	19,0
28 x 22 x 28	80329	42	19	41,0	20,0	42,0	19,0
35 x 22 x 35	80330	50	24	44,0	23,0	50,0	24,0
35 x 28 x 35	80331	50	24	44,0	21,0	50,0	24,0
42 x 35 x 42	80517	57	27	61,0	35,0	57,0	27,0
54 x 42 x 54	80518	69	34	70,0	40,0	69,0	34,0

G7243 Riduzione MF

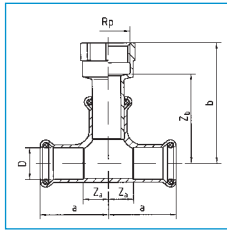
(pressato x estremità di inserimento)



Dimensione	N° articolo	a	Z
Ø18 x 15	80332	55	35
Ø22 x 15	80333	59	39
Ø22 x 18	80334	57	37
Ø28 x 15	80335	59	39
Ø28 x 18	80336	64	44
Ø28 x 22	80337	60	39
Ø35 x 22	80338	71	50
Ø35 x 28	80339	68	45
Ø42 x 22	80356	81	60
Ø42 x 28	80357	81	58
Ø42 x 35	80358	73	47
Ø54 x 35	80359	96	70
Ø54 x 42	80360	89	59

G6130G Raccordo a T con derivazione filetto femmina

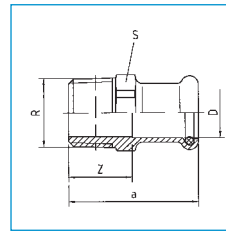
(pressato x filetto interno x pressato)



Dimensione	N° articolo	a	Za	b	Zb
15 x Rp1/2 x 15	80222	32	12	59,1	44,1
18 x Rp1/2 x 18	80223	34	14	62,1	47,1
22 x Rp1/2 x 22	80224	37	16	65,1	50,1
22 x Rp3/4 x 22	80225	37	16	67,0	50,7
28 x Rp1/2 x 28	80226	42	19	67,6	52,6
28 x Rp3/4 x 28	80227	42	19	68,5	52,5
35 x Rp1/2 x 35	80229	50	24	69,1	54,1
35 x Rp1 x 35	80228	50	24	74,8	55,7
42 x Rp1/2 x 42	80219	57	37	81,0	66,1
42 x Rp1 x 42	80220	57	37	88,8	69,7
54 x Rp1/2 x 54	80221	69	34	86,1	71,1
54 x Rp1 x 54	80264	69	34	94,8	75,7

G6243G Manicotto misto con filetto maschio

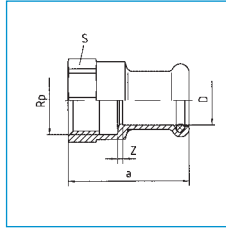
(pressato x filetto esterno)



Dimensione	N° articolo	a	Z	s
15 x R1/2	80233	36,6	16,6	21,0
15 x R3/4	80234	39,0	19,0	25,0
18 x R1/2	80235	37,4	17,4	25,0
18 x R3/4	80236	39,0	19,0	25,0
22 x R1/2	80239	38,4	17,4	30,0
22 x R3/4	80237	40,0	19,0	30,0
22 x R1	80238	42,3	21,3	32,0
28 x R3/4	80241	42,5	19,5	36,0
28 x R1	80242	44,4	21,4	36,0
28 x R1 1/4	80240	48,1	25,1	39,5
35 x R1	80243	48,0	22,0	41,0
35 x R1 1/4	80244	49,6	23,6	41,0
42 x R1 1/4	80274	58,2	28,2	51,0
42 x R1 1/2	80273	58,0	28,0	51,0
54 x R2	80275	62,7	27,7	62,5

G6270G Manicotto misto con filetto femmina

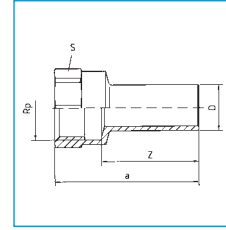
(pressato x filetto interno)



Dimensione	N° articolo	a	Z	s
15 x Rp1/2	80256	37,5	2,5	24,5
15 x Rp3/4	80257	39,4	3,1	30,0
18 x Rp1/2	80258	37,0	2,0	25,0
18 x Rp3/4	80259	39,0	2,7	30,0
22 x Rp1/2	80260	36,5	0,5	30,0
22 x Rp3/4	80261	39,0	1,7	30,0
28 x Rp1	80262	44,5	2,4	37,0
35 x Rp1 1/4	80263	49,5	2,1	46,0
42 x Rp1 1/2	80278	53,6	2,2	52,5
54 x Rp2	80279	63,1	2,4	65,0

G6246G Codolo misto con filetto femmina

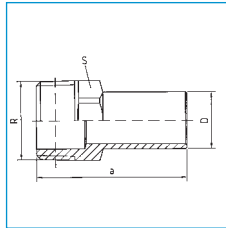
(estremità di inserimento x filetto interno)



Dimensione	N° articolo	a	S	Z
15 x Rp1/2	80245	47,1	24,5	32,1
18 x Rp1/2	80246	46,7	24,5	31,7
18 x Rp3/4	80247	49,0	30,0	32,7
22 x Rp1/2	80248	46,1	24,5	31,1
22 x Rp3/4	80249	48,5	30,0	32,2
28 x Rp3/4	80251	49,8	30,0	33,5
28 x Rp1	80250	53,8	37,0	34,7
35 x Rp1	80252	55,9	37,0	36,8
35 x Rp1 1/4	80253	59,6	46,0	38,2
42 x Rp1 1/2	80254	76,2	52,5	54,8
54 x Rp2	80255	86,1	65,0	60,4

G6280G Codolo misto con filetto maschio

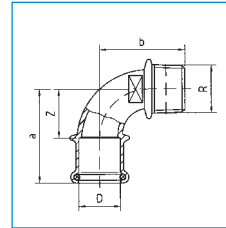
(estremità di inserimento x filetto esterno)



Dimensione	N° articolo	a	S
15 x R1/2	80265	50,1	19,0
18 x R1/2	80266	49,7	19,0
18 x R3/4	80267	52,7	25,0
22 x R1/2	80268	50,5	25,0
22 x R3/4	80269	52,1	25,0
28 x R1	80270	57,2	32,0
35 x R1 1/4	80271	63,2	39,5
42 x R1 1/2	80272	80,1	46,0

G6092G Gomito misto a 90° con filetto maschio

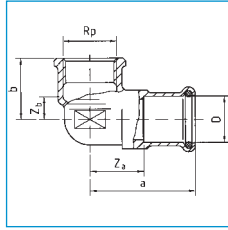
(pressato x filetto esterno)



Dimensione	N° articolo	b	Z	a
15 x R1/2	80475	33	34,4	54,4
18 x R1/2	80476	33	35,2	52,2
18 x R3/4	80477	37	39,5	59,5
22 x R3/4	80478	37	39,5	60,5
28 x R1	80479	52	49,0	72,0
35 x R1 1/4	80480	60	55,9	81,9
42 x R1 1/2	80481	65	62,6	92,6
54 x R2	80482	74	69,3	104,3

G6090G Gomito misto a 90° con filetto femmina

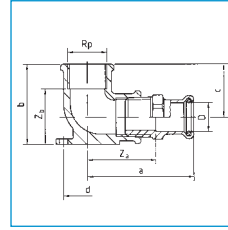
(pressato x filetto interno)



Dimensione	N° articolo	a	Za	b	Zb
15 x Rp1/2	80464	54,4	26	34,4	15,0
15 x Rp3/4	80465	59,5	30	39,5	17,0
18 x Rp1/2	80466	55,2	26	35,2	15,0
18 x Rp3/4	80467	59,5	30	39,5	17,0
22 x Rp1/2	80468	56,2	26	35,2	15,0
22 x Rp3/4	80469	60,5	30	39,5	17,0
22 x Rp1	80470	69,9	38	48,9	21,0
28 x Rp1	80471	72,0	38	49,0	21,0
35 x Rp1 1/4	80472	80,9	44	54,9	25,0
42 x Rp1 1/2	80473	88,6	46	58,6	27,0
54 x Rp2	80474	103,0	57	68,3	33,5

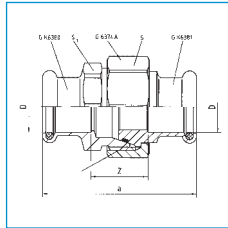
G6471G Gomito misto a 90° femmina con flangia

(pressato x filetto interno)



Dimensione	N° articolo	a	Za	b	Zb	c	d
15 x Rp1/2	80230	51,4	31,4	38	27,0	23,0	40
18 x Rp1/2	80231	52,2	32,2	38	27,0	23,0	40
22 x Rp3/4	80232	59,3	38,3	46	33,2	28,8	50

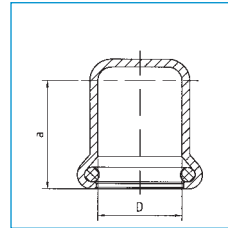
G6340 Bocchettone a sede piana con 2 attacchi a pressare (2 x pressato)



Dimensione	N° articolo	a	Z	S	S1	G
15 x 7/8 x 15	85012	61,0	21,0	34	28	7/8
18 x 1 1/8 x 18	85013	66,7	26,7	41	36	1.1/8
22 x 1 1/8 x 22	85014	66,3	24,3	41	36	1.1/8
28 x 1 3/8 x 28	85015	74,9	28,9	48	41	1.3/8
35 x 1 3/4 x 35	85016	82,4	30,4	58	50	1.3/4

G7301 Tappo femmina per chiusura definitiva

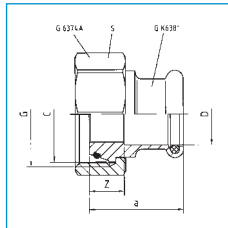
(1 x pressato)



Dimensione	N° articolo	a
15	80361	20
18	80362	20
22	80363	21
28	80364	23
35	80365	26
42	80368	30
54	80369	35

G6360 Manicotto a dado libero

(pressato x filetto interno)



Dimensione	N° articolo	a	Z	C	S
15 x 7/8	84990	29,0	9,0	27,5	34

G7999 O-ring di tenuta

(in NBR giallo) per rame GAS



Dimensione	N° articolo
15	80101
18	80102
22	80103
28	80104
35	80105
42	80106
54	80107